

INTER-LAKE YACHTING ASSOCIATION
BAY WEEK REGATTA
AUGUST 1-3, 2014
PUT-IN-BAY YACHT CLUB
PUT-IN-BAY, OH
SAILING INSTRUCTIONS FOR THE KEELBOAT COURSES

1. RULES

- 1.1. The regatta will be governed by the rules as defined in the current Racing Rules of Sailing (RRS).
- 1.2. The course to be sailed and the approximate compass direction to Mark 1 will be displayed from the Race Committee Signal Boat, using placards or flags not later than the preparatory signal. This changes RRS rule 27.1.
- 1.3. A change in the length of the course may or may not be indicated. This changes RRS rules 33(b).
- 1.4. Boats starting more than four (4) minutes after their starting signal will be scored as DNS without a hearing. This changes RRS rules 35, 63.1, A4.2 and A5.
- 1.5. In the event of a conflict between the Notice of Race and the Sailing Instructions, the Sailing Instructions shall prevail. The changes RRS 63.7.
- 1.6. Interference with Government and or Commercial vessels may result in protest by the Race Committee. This changes RRS A5, 35, 63.1 and 67.
- 1.7. The US Sailing Prescriptions to Rule 60, 63.2, and 63.4 do not apply.
- 1.8. All boats that are docked on Inter-Lake Yachting Association (I-LYA) paid town docks will be required to have streamers attached to the backstay.
- 1.9. Other rules which have been or will be changed are described further in these Sailing Instructions and/or in the Notice of Race.
- 1.10. RRS 61.1(a) is changed so that "A boat intending to protest about an incident that occurs in the racing area shall notify the race committee finish boat of her intention as soon as possible after finishing, including the sail number of the boat(s) being protested until acknowledged by the Race Committee signal boat."
- 1.11. The Organizing Authority for this regatta is the Inter-Lake Yachting Association (I-LYA).

2. ELIGIBILITY, ENTRY AND PLACEMENT

- 2.1. This event is open to members of USSailing or members of other National Authorities, members of recognized yacht clubs, members of recognized sailing class associations, and others as may be designated by the Organizing Authority.
- 2.2. The Organizing Authority, at its sole discretion, whose decision is final and without appeal, shall determine eligibility and placement in divisions.

3. NOTICES TO COMPETITORS

- 3.1. Notices to Competitors will be posted on the Official Notice Board on the Put-in-Bay Yacht Club (PIBYC) front windows by the patio bar.

4. CHANGES TO SAILING INSTRUCTIONS

- 4.1. Any change to the Sailing Instructions will be posted before 0730 on the day it will take effect, except that any change to scheduled races will be posted before 2000 the day before it will take effect.

5. SIGNALS MADE ASHORE

- 5.1. Signals made ashore will be displayed from the yardarm on the pier at the Put-in-Bay Yacht Club. Signals may be duplicated from the Race Committee (RC) Boat in the harbor.
- 5.2. When flag AP is flown ashore, '1 minute' is replaced with "not less than 60 minutes" in the race signal definition of AP.

6. SCHEDULE OF RACES

- 6.1. The scheduled time for the first warning signal is as follows:

| | |
|-------------------------|-------------|
| Friday August 1, 2014: | 0925 hours. |
| Saturday August 2, 2014 | 0925 hours. |
| Sunday August 3, 2014: | 0925 hours. |

- 6.2. When more than one race will be held on the same day, the warning signal for each succeeding race shall be made as soon as practicable at the race committee's discretion.
- 6.3. On Sunday, no warning signal will be made after 1130 hours.

7. CLASS FLAGS & SPLITS

- 7.1. Class flags & splits will be posted on the official notice board.

8. RACING AREAS

- 8.1. West Keel Boat Course starting area will be to the west of South Bass Island.
- 8.2. East Keel Boat course will be east of Ballast Island.

9. COURSES

- 9.1. Windward - Leeward Courses. Marks are to be left to Port, unless a gate is used instead of Mark 3. The possible courses to be sailed, including the order in which the marks are to be passed, and the side on which each mark is to be left, are shown in the diagrams in Attachment 1.
- 9.2. Leeward Gate: When the Race Committee sets a gate instead of 3, all boats shall sail between Mark 3S and Mark 3P from the direction of the last mark, and round either Mark 3S to starboard or Mark 3P to port. See Attachment 1.
- 9.3. AROUND THE ISLANDS COURSES. Mark Sequences: The possible courses to be sailed, including the order in which the marks are to be passed, and the side on which each mark is to be left, are shown in the diagrams in Attachment 2.
- 9.4. The I-LYA around the islands race (Course C and/or D) Mark #1 is to be rounded either to port or starboard depending on the course to the next mark. Before the start, the Race Committee will display either a RED flag (port rounding) or GREEN flag (starboard rounding) from the starboard corner of the Race Committee Signal Boat.
- 9.5. Attachment 3 shows the approximate location of the marks for the around the islands race(s).

10. MARKS

- 10.1. All marks for Course A and B will be inflatable.
- 10.2. The Start mark will be a YELLOW tetrahedron.
- 10.3. Change marks will be YELLOW tetrahedrons or cylinder.
- 10.4. Mark #1 all courses ORANGE tetrahedron or cylinder.
- 10.5. Mark #3 (or gate) for course "A" and "B" is an ORANGE tetrahedron.
- 10.6. The Finishing mark is a YELLOW CYLINDER.

11. START

- 11.1. Races will be started using RRS 26.
- 11.2. The starting line will be between the staff supporting an ORANGE FLAG on the Race Committee Signal Boat and a Yellow Tetrahedron at the port end, or the staff supporting an ORANGE FLAG on a Race Committee Boat on the Port end of the Starting Line.
- 11.3. The start order may vary after the first race of the day.

12. RECALLS

- 12.1. Individual and general recalls will be signaled according to RRS 29.1 and 29.2. The RC intends to make an attempt to hail boats over early on the VHF channel designated for their racing area. However, it is each competitor's responsibility to start properly.
- 12.2. The following are NOT grounds for redress: failure of the RC to hail any or all boats OCS (on course side), failure of the committee to hail one or more boats, failure of a boat to hear its hail, timeliness of the hail, or the order of the boats within the hails.

13. CHANGE OF THE NEXT LEG OF THE COURSE (COURSE A OR COURSE B).

- 13.1. Changing the next leg of the course after the start will be done in accordance with RRS 33.
- 13.2. A change of course before the start of any class may be signaled from the RC Signal Boat before the Preparatory Signal ("P", "I", "Z", "Black") for that class by displaying the code flag "C" with repetitive sounds and displaying the new approximate direction to the new first mark. The relevant class and all subsequent classes will

sail to the change mark, which shall be yellow. Subsequent changes will alternate the colors of the marks.

14. **SHORTENING THE COURSE**

14.1. Shortening the course will be by RRS 32. If the RC boat flying code flag “S” displays a class flag or flags, the course is shortened only for that class (those classes).

15. **FINISH**

15.1. The *Finishing Line* will be between the staff displaying an Orange Flag on the RC boat and a Finish Mark which shall be a YELLOW CYLINDER.

16. **TIME LIMITS**

16.1. The Time Limit is three (3) hours for windward-leeward races and five (5) hours for the around islands race. Any boat not finished within the time limit will be scored DNF without a hearing. This changes RRS 35 and 63.1.

16.2. When sailing the windward-leeward courses (Course A or B) (Attachment 1), boats finishing more than 30 minutes after the first finisher in its class will be scored DNF without a hearing. This changes RRS 35, 63.1 A4, and A5.

16.3. On courses other than the around the island races, if no boat in each class reaches the first mark within an hour, the race shall be abandoned.

16.4. When sailing the around the island race (Course C or D) (Attachment 2) boats finishing more than 90 minutes after the first finisher in its class will be scored DNF without a hearing. This changes RRS 35, 63.1 A4, and A5.

17. **PROTESTS AND REQUESTS FOR REDRESS**

17.1. Protest forms are available at race office at PIBYC, and protests shall be delivered there during the Protest Time limit as defined in Sailing Instruction 17.2.

17.2. For all classes, the Protest Time limit is sixty (60) minutes after the RC Signal Boat docks.

17.3. Notices will be posted no later than thirty (30) minutes after the protest time limit expires to inform competitors they are parties or witnesses. Hearings will be held in the Put-In-Bay Yacht Club beginning at the time posted in the notice. This posting constitutes the notice required by RRS 63.2 (Time and Place of the Hearing).

17.4. On the last scheduled day of racing a request for reopening a hearing shall be delivered:

(a) within the protest time limit if the requesting party was informed of the decision on the previous day, or;

(b) no later than 30 minutes after the requesting party was informed of the decision that day. This changes RRS 66.

17.5. On the last scheduled day of racing a request for redress based on a Protest Committee decision shall be delivered no later than 30 minutes after the decision was posted. This changes RRS 62.2.

17.6. Alleged breaches of Sailing Instruction 1.6 and 1.8 shall not be grounds for protest or redress by a competitor.

Penalties for breaches of these rules may, at the discretion of the Protest Committee, be less than disqualification in which case they will be scored as “discretionary penalty imposed” (DPI). This changes RRS 60.1(a) and A 11.

18. **SCORING**

18.1. One race constitutes a series.

18.2. A boat’s series score shall be the total of her race scores. No scores will be excluded. This changes RRS A2.

19. **SAFETY**

19.1. A boat that retires shall notify the RC signal boat or the Race Office ashore as soon as possible in any practical manner (e.g. hail, VHF radio, cellular phone, etc.).

20. **AWARDS**

20.1. Awards will be given to the first three places in each division.

20.2. Daily firsts will be given to the first place finisher in the first race for each division.

20.3. PHRF I-LYA Championship will be given to the PHRF boat with the best average score in her division calculated by the Cox-Sprague formula. The average score is calculated by adding the individual Cox-Sprague scores for each race and dividing the total by the number of races scored. Ties are broken according to RRS A.8.

21. **RADIO COMMUNICATION**

21.1. Except in an emergency and as permitted under Instruction 19.1, a boat, while racing, shall neither make nor receive radio communications not available to all boats. This restriction applies also to mobile telephones or other portable devices.

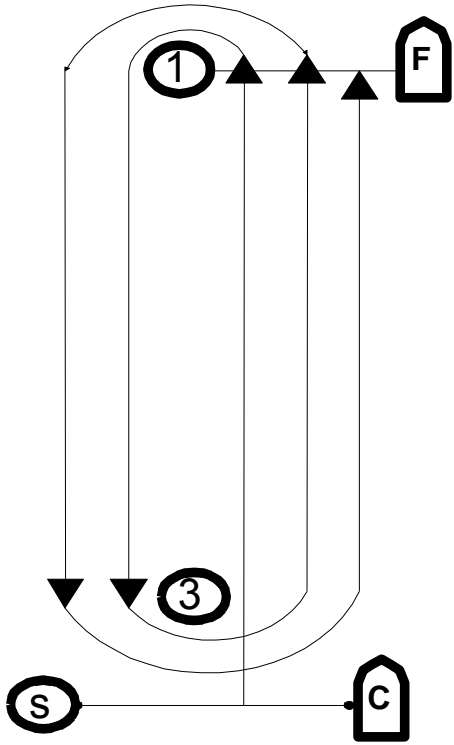
- 21.2. Course specific VHF frequencies which will be used by the RC will be posted on the official notice board. The Keelboat Course set up on the West side of the island will use Channel 78A.
- 21.3. Race Committee communications, which may be overheard by competitors, shall not be grounds for redress.

22. DISCLAIMER OF RESPONSIBILITY

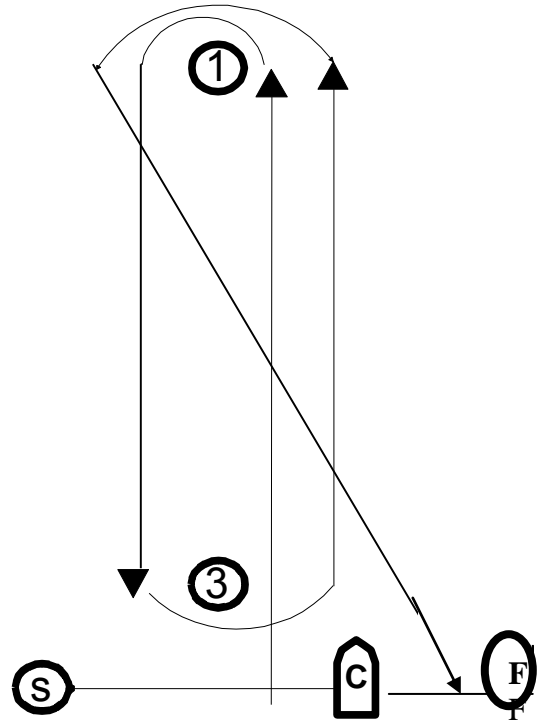
- 22.1. Sailing is an activity that has inherent risk of damage and injury. Competitors in this event are participating entirely at their own risk. See RRS 4: “decision to race.” The Race Organizers (Organizing Authority, Race Committee, Protest Committee, host club, sponsors or any other organization or official) will not be responsible for damage to any boat or other property; or injury to any competitor, including death, sustained as a result of participation in this event. By participating in this event, each competitor agrees to release the race organizers from any and all liability associated with such competitor’s participation in this event to the fullest extent permitted by law.

Attachment 1

COURSE "A"

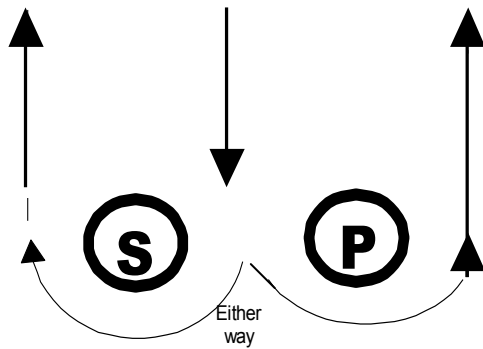


COURSE "B"



MARK 3 if it is A GATE

TO MARK 1 From Mark 1 TO MARK 1



**Attachment 2
2013 Bay Week
West Course**

Round Island Course Mark Descriptions

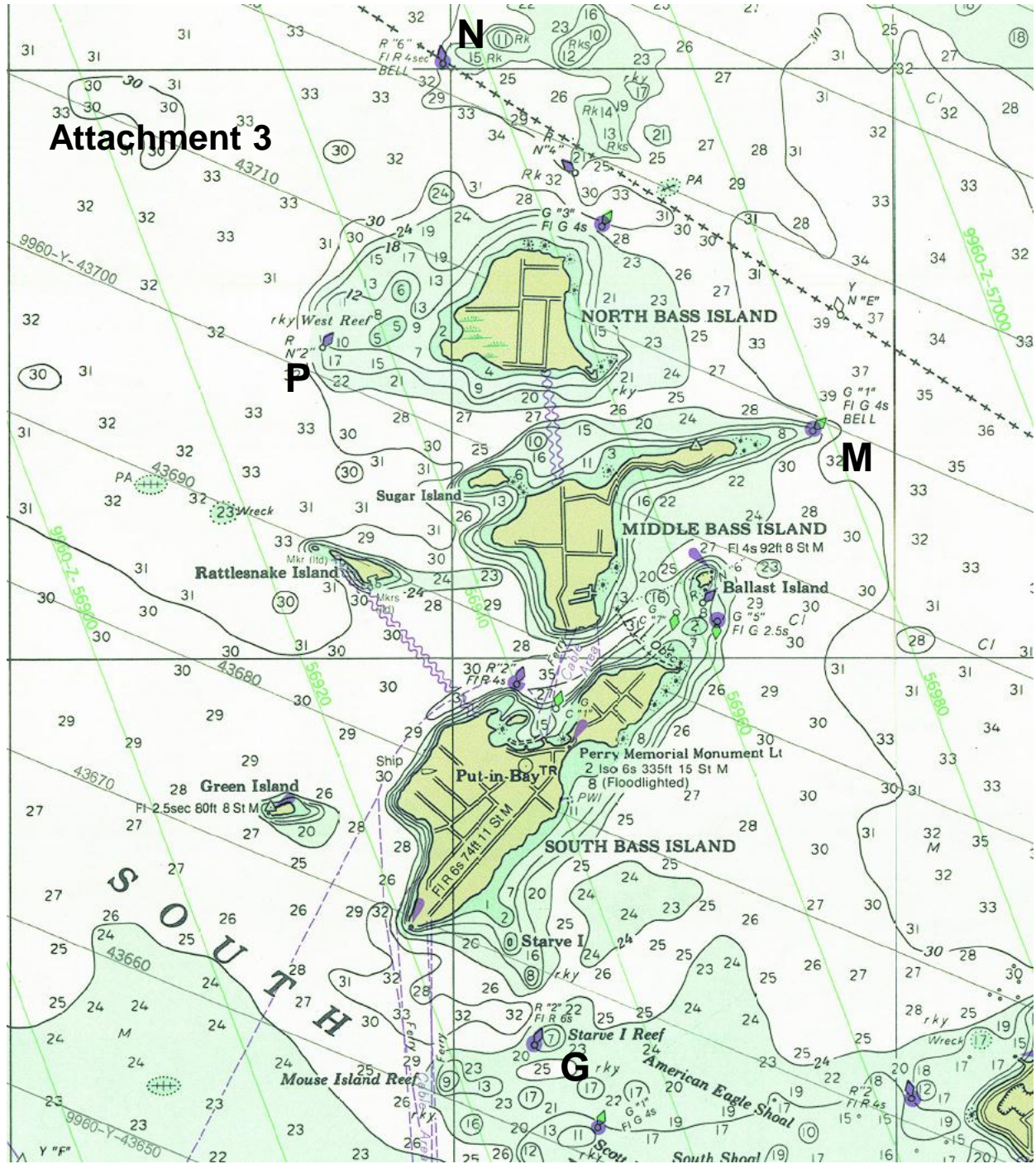
GPS Co-ordinates from 2009 Lake Erie Light List. Provided for reference only.
Minor variation of actual GPS locations shall not be grounds for redress.

| <u>Designation</u> | <u>Description</u> | <u>Location (Approx.)</u> |
|-------------------------------------|---|---|
| I-LYA Mark 1 | Orange Tetrahedron | ½ mile upwind of start. |
| G | Starve Island Reef Light R2 | 41°36.415 N 82°49.023 W |
| M | Middle Bass Island East Shoal G1 | 41°41.542 N 82°45.547 W |
| N | North Bass Island R6 | 41°45.019 N 82°50.052 W |
| P | North Bass Island Shoal R2 | 41°42.368 N 82°51.279 W |
| Ballast | Island | |
| Set Mark West of the Rattles. | Island and Yellow Tetrahedron 0.2 nautical mile West of the rattles. | 41° 40.982 N 82° 51.828 W Approx. |
| Rattle Snake | Island | |
| Green | Island | |

The Signal Boat will display the Course Designation (C, D, E, G, H, J, K)
The Race Committee will set a Yellow tetrahedron "Mark1" approximately 1/2 nautical mile to windward of the starting line as the first mark. If Mark 1 is to be rounded to starboard a GREEN flag will be flying from the starboard stern of the signal boat. If Mark 1 is to be rounded to port a RED flag will be flying from the starboard stern of the signal boat.

Course #C Mark 1 (s/p), Green Island (p), G (p), Ballast Island (p), Start/Finish
Course #D Mark 1 (s/p), Ballast Island (s), G (s), Green Island (s), Start/Finish
Course #E Mark 1 (s/p), Ballast Island (s), G (s), Green Island (s), Start/Finish
Course #G Mark 1 (s/p), P (s), N (s), M (s), Start/Finish
Course #H Mark 1 (s/p), P (s), M (s), Start/Finish
Course #J Mark 1 (s/p), Green Island (p), Rattlesnake Island and Yellow Tet.
 West of Rattles (p), Start/Finish
Course #K Mark 1 (s/p), Rattlesnake Island and Yellow Tet. West of Rattles (s),
 Green Island (s), Start/Finish

Attachment 3



SAILING INSTRUCTIONS – CENTERBOARD COURSE

1. RULES

- 1.1 This regatta will be governed by the rules as defined in The Racing Rules of Sailing (RRS).
- 1.2 US prescriptions to RRS 60, 63.2 and 63.4 will not apply.
- 1.3 RRS 63.7 will be replaced by: "If there is a conflict between a rule in the notice of race and one in the sailing instructions, the sailing instructions shall apply."

2. NOTICES TO COMPETITORS

- 2.1 Notices to competitors will be posted on the official notice board located in the Put-in-Bay Yacht Club (PIBYC) front windows by the patio bar. Results will be posted on the front window of PIBYC near the bar.

3. CHANGES TO THE SAILING INSTRUCTIONS

- 3.1 Any change to the sailing instructions will be posted on the official notice board before 0730 on the day it will take effect, except that changes to the schedule of races will be posted by 2000 the day before it takes effect.

4. SIGNALS MADE ASHORE

- 4.1 Signals made ashore will be displayed at the flagpole located on the PIBYC pier.
- 4.2 When flag AP is displayed ashore, "1 minute" is replaced with "not less than 60 minutes" in the race signal AP. Competitors are instructed not to leave the harbor under on-shore AP.

5. SCHEDULE

- 5.1 Races are scheduled for August 1, 2 and 3. Multiple races may be held on any racing date, above, wind and weather permitting.
- 5.2 The scheduled time of the warning signal for the first race each day is 0855. Warning signals for subsequent races each day will be made as soon as practical. No warning signal will be made after 1230 on Sunday August 3rd.
- 5.3 A skipper's meeting will be held at 0730 on Friday August 1st on the patio outside the PIBYC bar.

6. CLASS FLAGS

- 6.1 Descriptions of the class flags are attached as Exhibit "B" and will be posted on the official notice board.

7. RACING AREA

- 7.1 The racing area will be in the waters of Lake Erie in an area generally between South Bass, Middle Bass, North Bass, Rattlesnake, and Green Islands.

8. THE COURSES

- 8.1 The diagrams in Exhibit "A" show the possible courses to be sailed, including the letter designating each course, the approximate angles between legs, the order in which marks are to be passed, and the side on which each mark is to be left.

SAILING INSTRUCTIONS (CENTERBOARD COURSE)

2014 I-LYA REGATTA

9. MARKS

- 9.1 All marks shall be inflated cylinders, tetrahedrons or spheres. Windward, leeward and reach marks shall be orange. Change marks shall be yellow. Start and finish marks shall be yellow.
- 9.2 A complete description of all marks to be used will be posted on the official notice board by 2000 on Thursday July 31st.

10. THE START

- 10.1 The starting line will be between a staff displaying an orange flag on the race committee signal boat and the yellow mark on the port side of the race committee signal boat.
- 10.2 Boats whose warning signal has not been made shall avoid the starting area during the starting sequence for other races.
- 10.3 The Race Committee may attempt to hail OCS sail numbers. Failure to make these hails or failure to include a sail number or failure to hear or understand them shall not constitute grounds for granting redress. This changes RRS 62.1.
- 10.4 A boat starting later than five (5) minutes after her starting signal will be scored Did Not Start without a hearing. This changes rules A4 and A5.
- 10.5 Race Committee may, at its own discretion, start multiple fleets simultaneously.

11. CHANGE TO THE NEXT LEG OF THE COURSE

- 11.1 To change the next leg of the course, the race committee will lay a new mark (or move the finishing line) and remove the original mark as soon as practicable. When in a subsequent change a new mark is replaced, it will be replaced by an original mark.

12. THE FINISH

- 12.1 The finishing line will be between the staff displaying an orange flag on the race committee signal boat and the nearby yellow finish mark on the starboard side of the race committee signal boat.

13. PENALTY SYSTEM

- 13.1 The first sentence of rule 44.1 are changed to: 'A boat may take a One-Turn Penalty when she may have broken a rule of Part 2 or rule 31 while racing.'

14. TIME LIMITS

- 14.1 If no boat has passed Mark 1 within thirty (30) minutes of the start, or if no boat finishes within seventy-five (75) minutes of the start, the race shall be abandoned. Failure to meet the time limits will not be grounds for redress. This changes Rule 62.1(a).
- 14.2 Boats failing to finish within fifteen (15) minutes after the first boat of the fleet sails the course and finishes will be scored Time Limit Expired (TLE) without a hearing and awarded points equal to the number of finishers plus two (2). This changes rules 35, A4, A5 and A11.

15. PROTESTS AND REQUESTS FOR REDRESS

- 15.1 For each class, the protest time limit is 60 minutes after the Race Committee boat docks following the last race of the day. The Race Committee will post the protest time limit on the official notice board.
- 15.2 Protests shall be delivered to the Protest Committee desk at PIBYC. Hearings will be held as soon as possible after racing each day at PIBYC. Notices shall be posted on the official notice board within 30

SAILING INSTRUCTIONS (CENTERBOARD COURSE)

2014 I-LYA REGATTA

minutes of the protest time limit to inform competitors of hearings in which they may be parties or witnesses.

16. SCORING

- 16.1 One race is required to be completed to constitute a series.
- 16.2 The Low Point scoring system described in Appendix A shall apply.

17. SAFETY (CHECK-IN AND CHECK-OUT)

- 17.1 Before the initial warning signal on each race day all boats shall check in with the race committee signal boat by sailing across her stern and hailing their sail number until acknowledged. The race committee may check in any boat sailing nearby, but is not required to do so.
- 17.2 A boat that retires from a race or decides to leave the racing area shall notify the race committee by hail until acknowledged as soon as possible before leaving the racing area.

18. RADIO COMMUNICATIONS

- 18.1 Except in an emergency, a boat shall neither make radio transmissions while racing nor receive radio communications not available to all boats. This restriction also applies to mobile telephones.
- 18.2 Communications between the Race Committee that may be overheard by a competitor shall not be grounds for redress. This changes Rule 62.1(a).

19. PRIZES

- 19.1 Prizes will be given as follows: first three places in each racing fleet with five (5) or more boats registered, first two places in each racing fleet with four (4) boats registered, first place in each racing fleet with three (3) or fewer boats registered.
- 19.2 DAILY FIRST awards are given to the winner of the first race in each class each day.

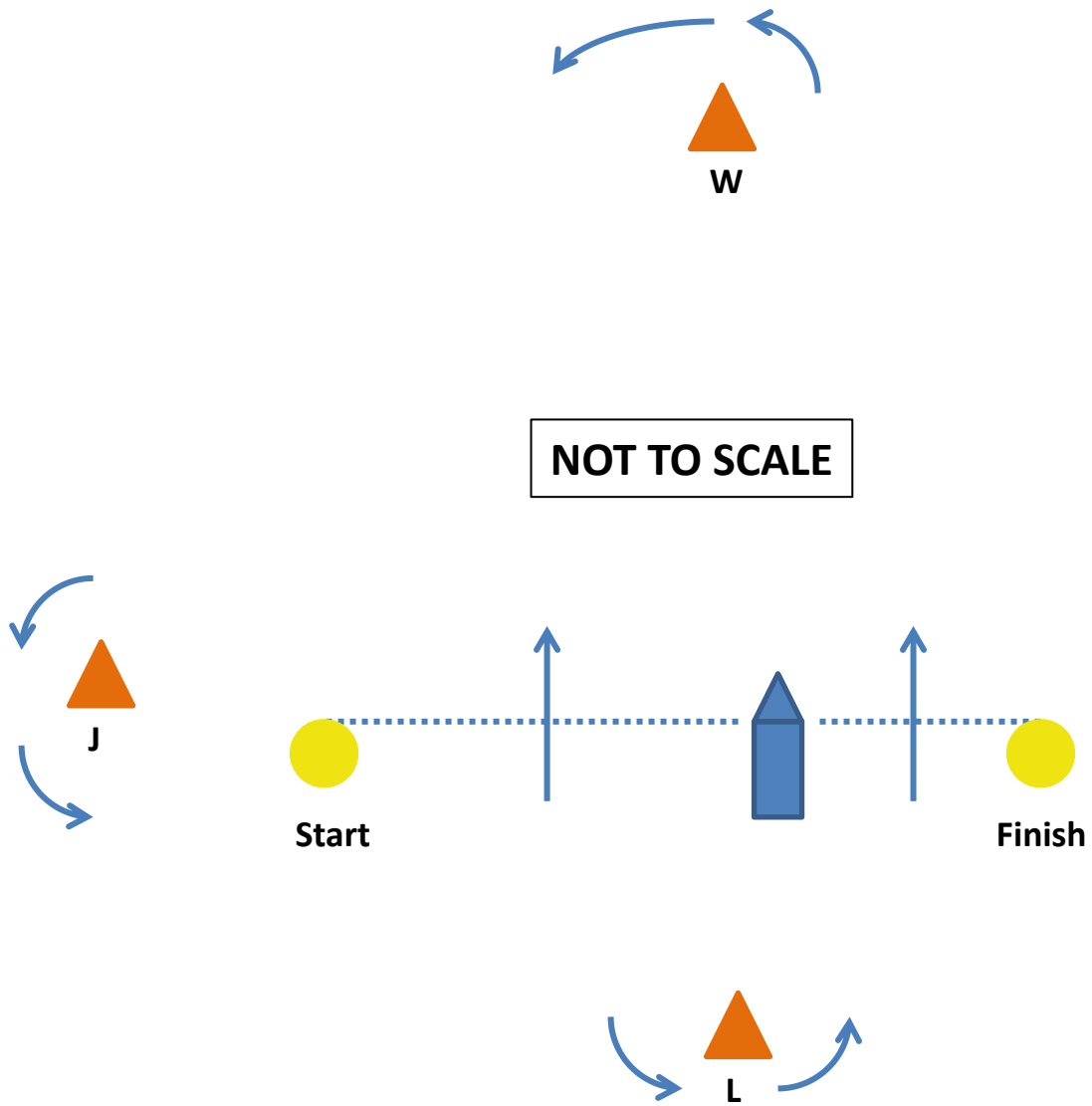
20. DISCLAIMER OF LIABILITY

- 20.1 Sailing is an activity that has an inherent risk of damage and injury. Competitors and coaches participate in the regatta entirely at their own risk. See rule 4, Decision to Race.
- 20.2 The race organizers (organizing authority, race committee, protest committee, host club, sponsors, or any other organization or official) will not be responsible for damage to any boat or other property or the injury to any competitor, including death, sustained as a result of participation in this event. By participating in this event, each competitor or coach agrees to release the race organizers from any and all liability associated with such competitor's participation in this event to the fullest extent permitted by law.

21. FURTHER INFORMATION

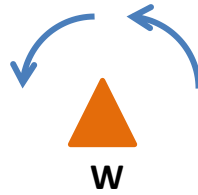
- 21.1 For further information, please visit the I-LYA Regatta Website, or contact Jonathan Histed, Centerboard Course PRO, (216)287-0420, jhisted@mac.com.

EXHIBIT “A” – Course Diagram(s)

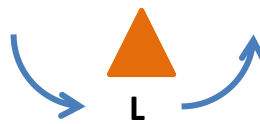
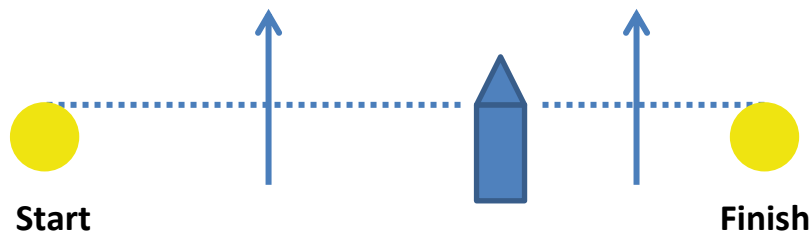


| Course | Mark Sequence |
|--------|---|
| “A” | Start – W(p) – J(p) – L(p) – Finish |
| “B” | Start – W(p) – J(p) – L(p) – W(p) – L(p) – Finish |

EXHIBIT “A” Continued – Course Diagram(s)

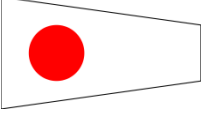
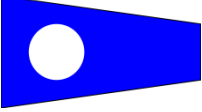
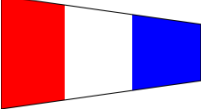
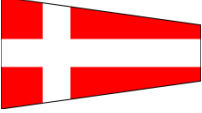


NOT TO SCALE



| Course | Mark Sequence |
|--------|--|
| “C” | Start – W(p) – L(p) – Finish |
| “D” | Start – W(p) – L(p) – W(p) – L(p) – Finish |

EXHIBIT “B” – Class Flags

| Fleet | Class Flag |
|------------------------|--|
| Hobie Wave IWCA |  |
| Hobie Wave HCA |  |
| Beach Cats |  |
| Interlake |  |

2014 I-LYA REGATTA
August 1-3, 2014
Inter-Lake Yachting Association
Put-in-Bay Yacht Club, Put-in-Bay OH

I-LYA Bay Week 2014 Cruising Class Sailing Instructions

BOATS AND RATINGS

1. Boats must have cruising accommodations below; i.e., usable bunks, a head and cooking amenities. All boats must have lifelines if factory equipped or alternative safety provisions satisfactory to the Cruising Class Race Committee and all USCG required safety equipment.
2. Races will be conducted using PHRF ratings. Boats having an official rating from any PHRF authority must provide a copy of their most recent rating certificate. PHRF ratings will be assigned by the Race Committee for those boats not having PHRF rating certificates based on information certified by the owner. Assigned ratings will give normal credits for fixed propellers and roller furling and will not be subject to any penalty for being unmeasured or without a certificate. The Race Committee may also assign a different PHRF rating for any boat in the regatta as appropriate in their sole judgment. The only likely reason for such an assignment is if identical or very similar boats from different areas have different PHRF ratings.
3. Boats having a roller furling credit must use a furling sail and cannot change sails while racing. Only Dacron, Pentax, polyester, or Mylar sail materials are allowed. No spinnakers, cruising chutes or bloopers are allowed and a staysail is allowed only if rated as part of a cutter rig. Headsails in excess of 155% LP are allowed only if they have been measured and are included in the PHRF rating.
4. All boats shall display the streamer included in the racing package on the backstay (or closest equivalent) during all races and as they are docking in the harbor.

RACING RULES and PENALTIES

1. The current edition of US Sailing's Racing Rules of Sailing (RRS) apply except as modified herein.
2. An adaptation of US Sailing's simplified guide to the RRS is included in the race packet.
3. In addition to the right-of-way rules note:
 - 3.1 Unless a boat causes injury or serious damage or gained a significant advantage by any violation of the Rules the boat violating the rule may exonerate itself by doing a two turn (two tacks and two jibes all in the same direction) as soon as possible but well clear of other boats. For touching a mark the penalty is one turn (one tack and one jibe all in the same direction).
 - 3.2 Note the requirements for a protest in the RRS and Simplified Guide.

3.3 The alternate procedures for dispute resolution as written in Appendix "T" of the 2013-2016 RRS shall apply.

RACES

1. There will be one race per day, Friday, Saturday and Sunday, unless any race is cancelled.
2. All completed races count; no throw-outs.
3. Scoring will be on low points with one point for first, two points for second, etc. Ties will be broken in accordance with RRS A8.1 and RRS A8.2.

POSTPONEMENT, ETC.

1. As with all races, the decision to start or continue is the inescapable responsibility of the master of the vessel.
2. If the race committee determines that any day's racing should be delayed or cancelled due to weather or for any other reason it will notify competitors as appropriate. If the decision to postpone is made while the race committee is ashore the "AP" pennant (three red and two white vertical stripes) will be raised at the PIB YC with two sound signals. A postponement can be for one or more specified fleets as designated by "Class Flags" flown under the AP pennant. The "Class Flag" for the Cruising Class is an International Code "C" flag (horizontal stripes of blue, white, red, white and blue.) If no Class Flags are displayed all classes are postponed. If the Cruising Class or all classes are postponed from shore, do not leave the harbor.
3. If there is no applicable postponement signal from the shore, the race committee for the Cruising Class may still postpone the Cruising Class start for any reason before the starting gun. If it does so, it shall fire two guns and fly the "AP" pennant.
4. If races are postponed from shore but are to continue, the Race Committee will lower the "AP" flag and sound a single sound signal in which case the warning signals will be made on the racecourse in not less than 60 minutes. If the Cruising Class start is postponed from the Race Committee boat the postponement shall end with the firing of one gun and lowering the "AP" pennant. Five minutes thereafter. The starting gun for the fifteen minute period will follow

THE START

1. Boats shall start between an orange flag displayed on the Race Committee boat and a buoy. The buoy is to be rounded on the same side as the marks of the course.
2. There will be a warning gun at 9:55 AM and a starting signal at 10:00 AM on Friday and Saturday. On Sunday the Warning gun will be at 9:25 and the starting signal will be at 9:30
3. Boats may start any time within 15 minutes (the "fifteen minute period":) after the starting gun without penalty.
4. Actual starting times will be recorded by the Race Committee and finish times will be adjusted to compensate for the different starting times except that all boats will be scored as starting no later than 15 minutes after the starting gun.

- Any boat starting later than 15 minutes after the start signal will be scored DNS (Did Not Start)

RADIO COMMUNICATIONS

- All competitors shall monitor Channel 80A from the warning gun until they finish.
- The Race Committee may communicate with the competitors on any matter on channel 80A
- Any boat which starts and no longer intends to finish shall promptly notify the Race Committee on Channel 80A.

THE MARKS AND COURSES

- Course numbers will be displayed on the Race Committee boat.
- The following marks and landmarks will be used to designate each course and shall be rounded to port or starboard as noted.

| Designation | Mark | Approx. Lat/Lon |
|-------------|---|------------------------------|
| B | Ballast Island (typical rounding) | 41° 40.75' N 82° 47.00' W |
| EF | East Finish Area Mark | 41° 40.50' N 82° 48.00' W |
| WF | West Finish Area Mark | 41° 39.75' N 82° 50.66' W |
| G | Green Island (typical west side rounding) | 41° 38.64' N 82° 52.20' W |
| G3 | G"3" NE of North Bass | 41° 43.7' N 82° 48.3' W |
| M | G"1" off east end of Middle Bass | 41° 41.90' N 82° 45.90' W |
| NB | North Bass typical SE corner rounding | 41° 42.50' N 82° 48.00' W |
| R | Yellow racing mark 0.20 NM true west of Rattlesnake Rattles | 41° 40.92' N 82° 51.83' W |
| R2 | R"2" west of North Bass | 41° 42.62' N 82° 51.50' W |
| S | Mark at end of starting line (which may also be finishing line.) Will always be the favored end. | 41° 41.00' N 82° 50.33' W |
| SI | Starve Island Reef R"2" | 41° 36.70' N 82° 49.05' W |

* All coordinates are approximate.

The Courses are as Follows (Distances allow for clearing landmasses)

| Course | Marks (and Rounding) | Distance |
|--------|---------------------------------------|----------|
| 1 | S, R, G, SI, B, EF (Marks to Port) | 12.1 NM |
| 2 | S, R2, G3, M, EF (Marks to Starboard) | 9.35 NM |
| 3 | S, R2, G3, NB, S (Marks to Starboard) | 8.0 NM |
| 4 | S, NB, G3, R2, S (Marks to Port) | 8.0 NM |
| 5 | S, R, G, WF (Marks to Port) | 4.8 NM |

THE FINISH

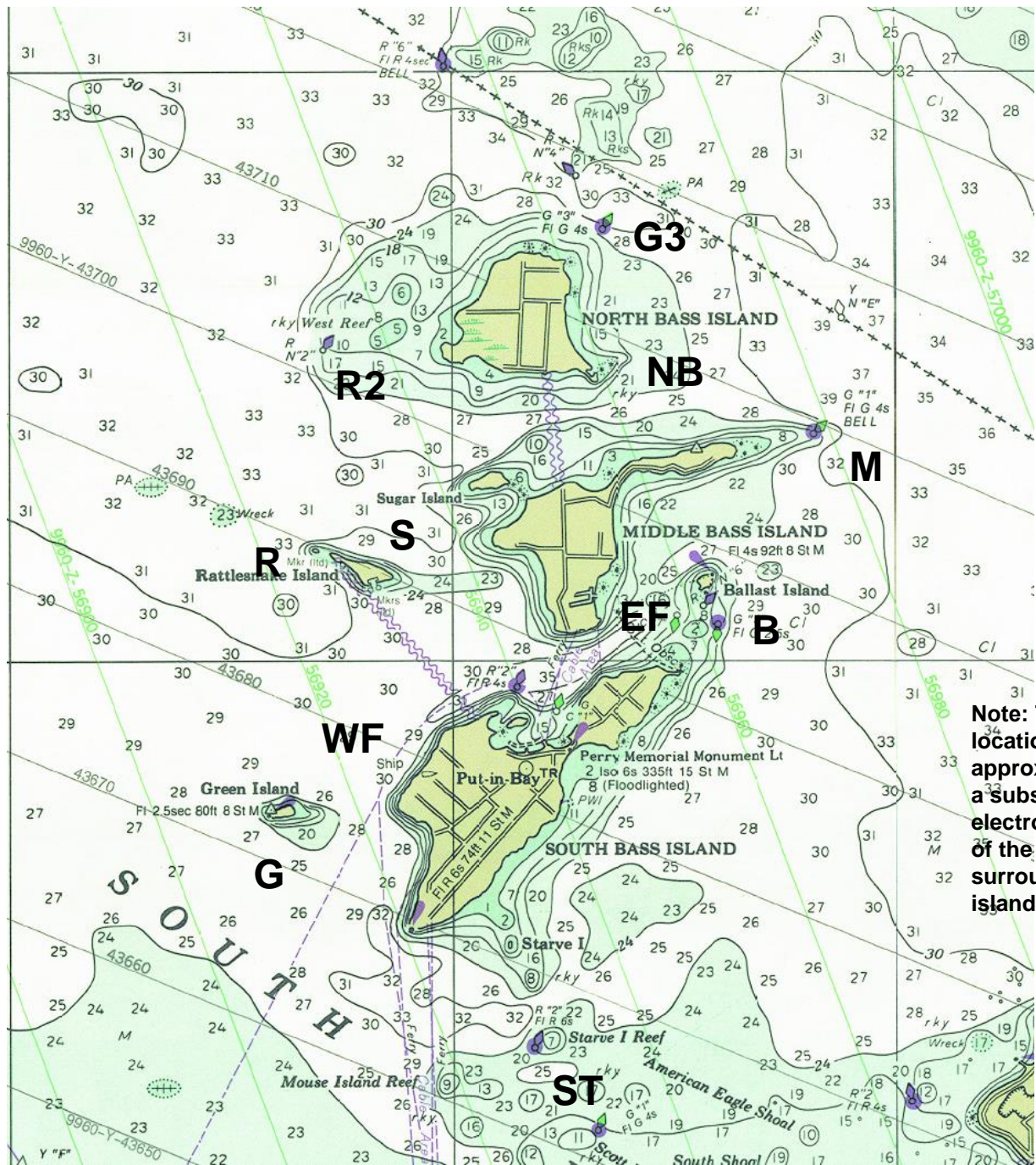
1. Boats shall finish is between the orange flag on the Race Committee boat and the buoy. The buoy will be on the starboard side as you approach from the direction of the last mark for starboard rounding courses and on the port for port rounding courses.
2. Note the need to record your own finish times as provided in the time limit/shorten course section.

TIME LIMIT/SHORTENING COURSE

- 1 There is a 5 hour time limit on the races Friday and Saturday and a 2 hour time limit on the race on Sunday. A race counts for all boats as long as at least one boat finishes within that time. Boats finishing after the committee boat has left its station must take their own time (GPS time) and advise the race committee on channel 80A. Boats taking their own finish times are considered to have “finished” when they are within 100 feet of the finishing mark on a line square to the previous mark.
2. The Race Committee may change the course any time before the warning gun without a separate notice. Any change after the warning gun will be announced on VHF Channel 80A and the course designation changed accordingly.
3. Due to the use of fixed marks, courses can be shortened during a race only by finishing at one of the marks of the course. The race committee will notify all competitors on VHF channel 80A if it intends to shorten the course and at what mark.

NOTES AND COMMENTS

1. The centerboard fleets will be racing in the area just south of the Cruising Class starting line and may start before the Cruising Class. Please try to avoid any interference with their races. The best course is likely to be staying near Middle Bass as you proceed north.
2. The awards ceremony is at 14:00 on Sunday. Please plan to attend to be recognized and/or to honor your fellow competitors.



Note: The "Mark" locations are approximate. This is not a substitute for a proper electronic or paper chart of the waters surrounding the various islands.